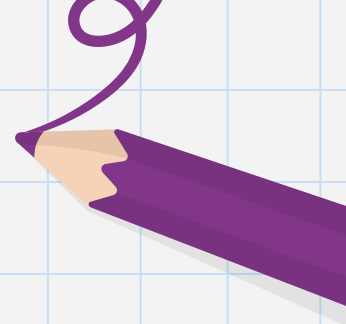




# Kindergarten Parent Orientation

**Manoa Elementary School  
SY 2021-2022**



# Introductions

- ▶ Mr. Okamoto, Principal
  - ▶ [jason.okamoto@k12.hi.us](mailto:jason.okamoto@k12.hi.us)
- ▶ Ms. Chung, Vice Principal
  - ▶ [natalie.chung@k12.hi.us](mailto:natalie.chung@k12.hi.us)
- ▶ Ms. Spencer & Mrs. Sugimoto, Counselors
  - ▶ [malaea.spencer@k12.hi.us](mailto:malaea.spencer@k12.hi.us) & [carly.sugimoto@k12.hi.us](mailto:carly.sugimoto@k12.hi.us)
- ▶ Ms. Galmiche, Distance Learning, Curriculum Coordinator
  - ▶ [gina.galmiche@k12.hi.us](mailto:gina.galmiche@k12.hi.us)



# General Information



- ▶ Opened in 1854, 167 years ago
- ▶ Grades: K – 5
- ▶ School colors: Yellow and Green (school pride Wednesdays)
- ▶ Mascot: Tiger
- ▶ Vision: Giving life to learning
- ▶ Mission: Together we nurture, empower, and inspire all students



# School Map

## Colored Doors:

**Red** - Music, Makua, Kindergarten, & SPED


**Orange** - Grade 5

**Yellow** - Grade 4

**Green** - Grade 3

**Purple** - Grades 1 & 2

# Before School



▶ Students will not be allowed on campus prior to 7:45 am, unless eating breakfast in the cafeteria - Drop off to cafe no earlier than 7:15 am

▶ Cub Club Early Risers Program (fee)

▶ Late arrivers: report to the office.




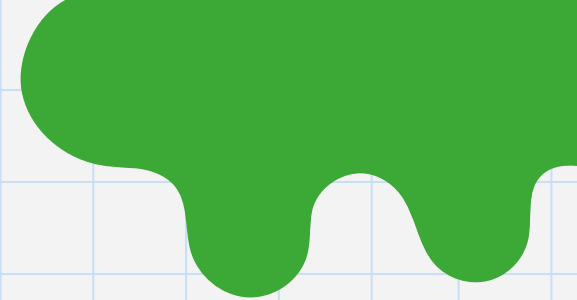
# Drop Off

## LOCATION

- ▶ Office - Grades 2 & 5
- ▶ Cafeteria - Grades K & 4
- ▶ Gym - Grades 1 & 3

## TIME

- 
- ▶ 7:45 - 8:00 - Grades K - 2
  - ▶ 8:00 - 8:15 - Grades 3-5






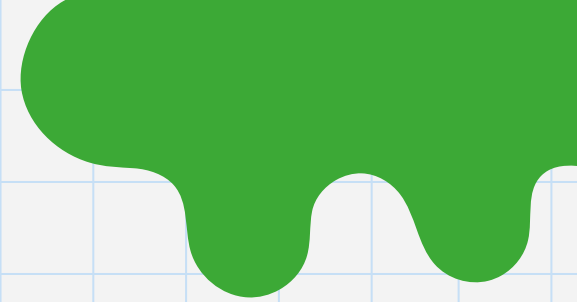
# Pick Up

## LOCATION

- ▶ Office - Grades 2 & 5
- ▶ Cafeteria - Grades K & 4
- ▶ Gym - Grades 1 & 3

## TIME

- 
- ▶ 1:45 - 2:00 - Grades K - 2 (W-1:00-1:15)
  - ▶ 2:00 - 2:15 - Grades 3 - 5 (W-1:15-1:30)



# If your child is sick....

▶ If a student is experiencing symptoms of Covid, respiratory illness or influenza, he/she should take the following precautions at home:

▶ Isolate and exclusion from school should be continued for 10 days after illness onset, or get a dr's note or a negative COVID test.

Please refer to our school's health and safety policies for more information.



# Illnesses

- ▶ To stop the spread of illness, ***students must stay home if they are feeling sick.***
- ▶ Families are asked to monitor their household members for the following symptoms of potential illness before leaving home
- ▶ Feverish or unusually warm (has flushed cheeks)
- ▶ Coughing/sneezing
- ▶ Sore throat
- ▶ Shortness of breath/difficulty breathing
- ▶ Headache/stomach ache/nausea
- ▶ Muscle pain/unusual fatigue
- ▶ New loss of taste or smell



# Morning Screening Procedures

- ▶ **Face masks will be mandatory.** Please have your child come to class with it on ready for the health screening.
- ▶ **Temperature checks and verbal questioning** prior to entrance of classroom. \*Temp. over 100.4 requires health room screening and mandatory pick up.
- ▶ **Wash hands/sanitize** before beginning morning duties

# After School

- ▶ Students are required to be picked up immediately once school ends (by parent, guardian, or after school program) and leave campus – no loitering on playgrounds
- ▶ On campus: A+, Cub Clubs
- ▶ Off campus: Manoa Valley Church, Japanese School
  - ▶ Contact program or office directly for information



# Attendance

- ▶ We encourage children to be present every day to maximize learning! Please refrain from scheduling trips during school days!
- ▶ If your child is absent you can...
  - ▶ Call the Absentee Hotline: 988-1868 x 222
- ▶ Homework requests for absences 2 or more days.
  - ▶ Call before 9:00am to request homework
  - ▶ Pick up between 2:30-4:00 pm in the office
- ▶ Early release – send a note with the reason and time of pickup to the teacher.
  - ▶ Your child will be waiting in the main office at the designated time. **Please do not go straight to the classroom and report to the office 15 minutes before pickup time.**



# Health room

- ▶ Located in the main office
- ▶ Let us know if your child has any health concerns/medication
- ▶ Teachers are NOT able to administer medication
- ▶ Please refer to Manoa School health and safety guidelines for current procedures.

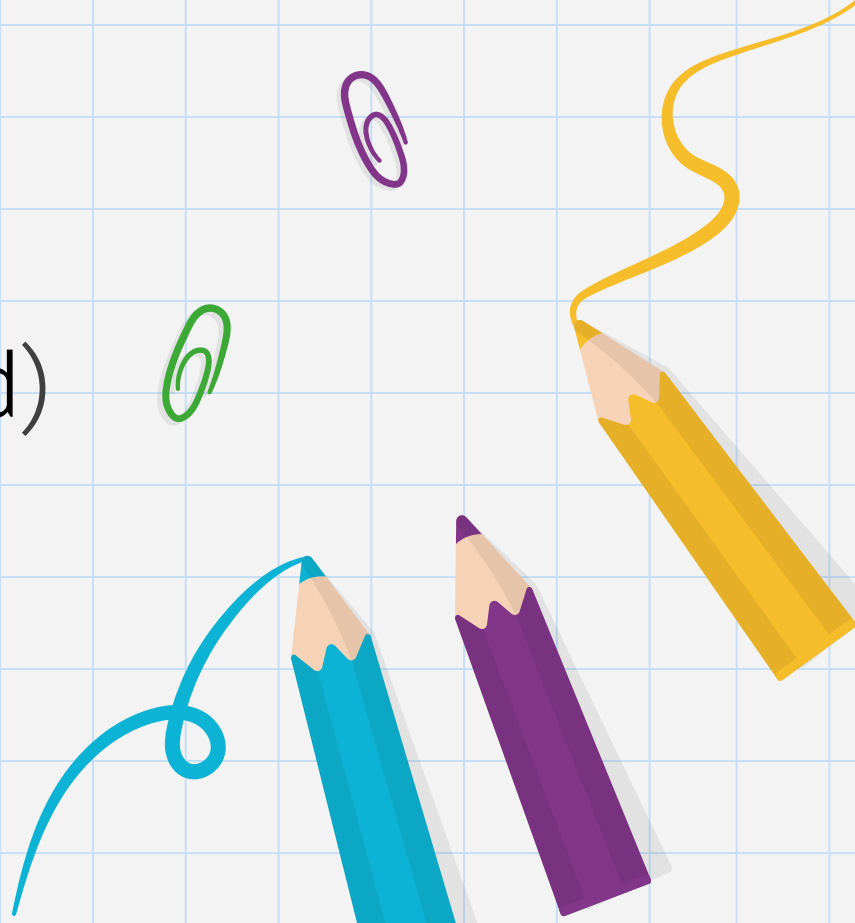


# Wellness Initiative

- ▶ We encourage our students to make healthy choices
- ▶ Students learn about hygiene, nutrition, and healthy lifestyles
- ▶ School lunches follow nutritional guidelines
- ▶ We encourage students and parents to bring healthy snacks
- ▶ Celebrations (birthday's, class parties, etc...) – **NO FOOD ITEMS WILL BE ALLOWED TO SHARE.** Non-food items are OK to bring upon parent discretion.

# Nut-Free School

- ▶ We are a nut-free school  
(any type of nut or spread)



# School Rules

- ▶ Chapter 19
  - ▶ Promote and maintain a safe and secure educational environment
  - ▶ Teach proper behavior
  - ▶ Deter students from acts which interfere with the purpose of education
  - ▶ Maintain proper student conduct to ensure that educational activities and responsibilities remain uninterrupted





# School Rules

## ▶ Contraband

- ▶ Radios, skateboards, slingshots, pipes, rods, ipods, video games, martial arts equipment, razor blades, electronic games, dice, loud noise-making devices, tobacco substances, bandanas, roller blades, any dangerous, unsafe object or “attractive nuisances”

- ▶ Cellular phone policy: Students may have phones but they must remain OFF in their bags during school hours. No playing of games/listening to music on campus.



# Breakfast

- ▶ 7:15 - 7:45 am in Cafeteria
- ▶ Cost:
  - ▶ Student – Full price \$1.10
  - ▶ Reduced price \$0.30
  - ▶ Parent \$2.40 (not allowed for SY 21-22)

**\*BREAKFAST WILL BE FREE FOR SY 21-22**


# Lunch

- ▶ 30 min starting at 10:45 am (3 serving times for school)
- ▶ Cost:
  - ▶ Student – Full price \$2.50
  - ▶ Reduced price - \$0.40
  - ▶ Extra milk - \$0.75
- ▶ Home lunch - sent with child in the morning – if forgot, drop in the main office and we will bring to class, do not go directly to their class.

**\* LUNCH WILL BE FREE FOR SY 21-22**

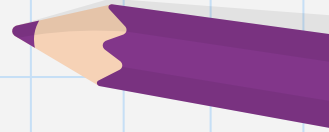
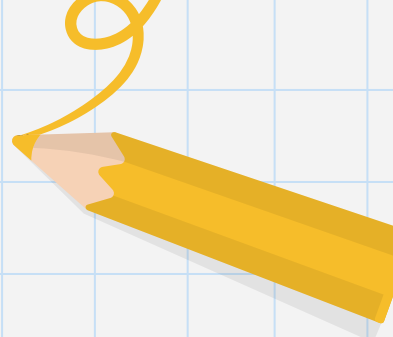
# Grades/Academic



- ▶ Core Subjects: *Language Arts, Math, Science, Social Studies*
  - ▶ Electives: *Music, PE, Hawaiiiana, Technology*
  - ▶ Grading - Standards-based – receive a proficiency grade for each subject: **ME** (Meets with Excellence), **MP** (Meets with Proficiency), **DP** (Developing Proficiency), **WB** (Well-Below)
  - ▶ Grade based on Hawaii Content Performance Standards III, Common Core Standards, Next Generation Science Standards (NGSS)
- 

# Grades/Academic

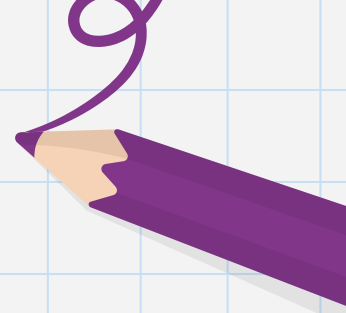
- ▶ General Learner Outcomes (GLO's)
  - 1 – Self Directed Learner
  - 2 – Community Contributor
  - 3 – Complex Thinker
  - 4 – Quality Producer
  - 5 – Effective Communicator
  - 6 – Effective User of Technology



# Positive Behavior Support (PBS)

- ▶ Behavior Matrix
- ▶ 3 B's (Be safe, Be respectful, Be responsible)
- ▶ Tiger Paws (pending for SY 21-22)
- ▶ Perfect Attendance (pending for SY 21-22)
- ▶ Value of the Month
- ▶ Caring School Communities - Social/Emotional Learning Program

# Parent Communication

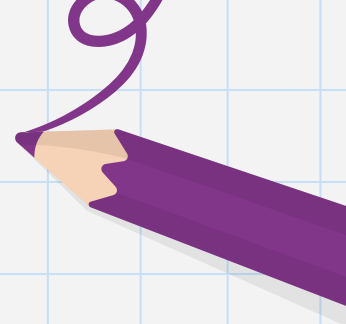


We love parent communication and support!

- ▶ 1<sup>st</sup> Day - Opening Folder
- ▶ Virtual Open House
- ▶ Progress Reports sent home each quarter
- ▶ Virtual Parent/Teacher Conference



# Parent Communication



- ▶ Manoa School website
- ▶ Contact teacher or counselor if you have questions, concerns, changes in the home, etc...







Any Questions?