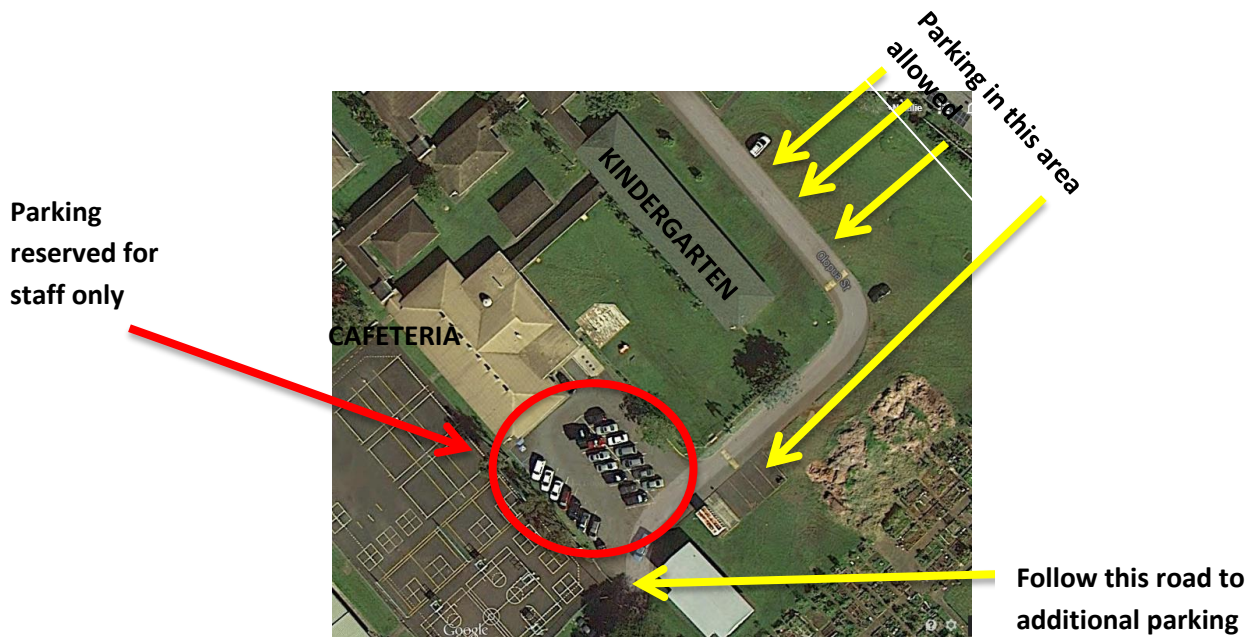


Parking lot and Drop off Procedures

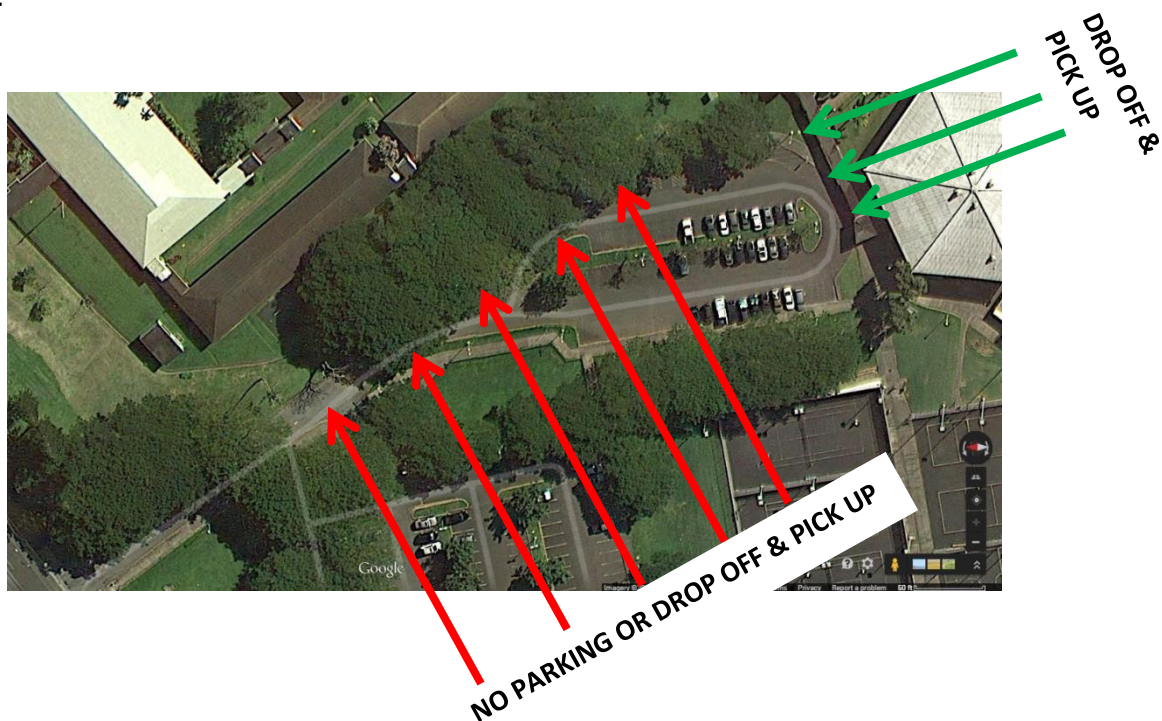
Cafeteria Parking Lot

As a reminder the cafeteria parking lot is reserved for staff only. All staff members will have a placard placed on their front dash to identify their cars as belonging to a staff member. Families may continue to use this parking lot as a **drop off area only**. If you would like to park your car please use the parking lot past the cafeteria parking lot or the grassy area across the kindergarten building (mountain side).



Gym Parking Lot

When dropping off your child in the morning please **park in a marked stall** or you may drop off at the bottom of the circle (indicated with green arrows). Please **do not** park or drop off your child in the area marked with red arrows.



When picking up your child in the afternoon please park in a marked stall while you are waiting for your child. You may also wait in the drop off area if space is available.

Lastly, we understand that mornings can be very hectic as many of you may be rushing off to work or to fulfill other responsibilities. However, while on campus we ask that you please drive with ALOHA and adhere to our drop off and pick off procedures to help keep our children safe and the flow of traffic moving. Your cooperation is greatly appreciated.

Thank you,
Natalie Chung
Vice Principal